



Ā M Ā N  
N A I L E R T B A N G K O K

Fact Sheet

Situated in Nai Lert Park in Thailand's capital, Aman Nai Lert Bangkok presents 52 contemporary suites, seven dining and socialising venues and a comprehensive Aman Spa & Wellness. Designed by Jean-Michel Gathy, the hotel serves as an urban sanctuary providing easy access to all points of interest in the city. The 9th floor is home to 1872, Arva, Aman's signature Italian restaurant and the hotel's outdoor infinity pool. Live music bar, Aman Lounge, and the Cigar Bar beckon from the 19th floor with skyline views and open-air terraces. On the same level, the hotel debuts two new signature Japanese restaurants: teppanyaki counter, Hiori, and Sesui, offering an omakase sushi experience.

#### LOCATION

- In the very centre of Bangkok
- Set within seven-acre Nai Lert Park
- Close to embassies, cultural and art institutions and renowned shopping areas

#### GETTING THERE

- 45- to 60-minute drive from Suvarnabhumi International Airport (BKK) and Don Mueang International Airport (DMK)

#### COMPLIMENTARY INCLUSIONS AND EXCLUSIVE AMENITIES

- Arrival fast track airport services and limousine transfer
- Flexible check in (subject to availability)
- Daily breakfast
- In-room refreshments, including alcoholic beverages
- Dedicated host services
- Daily cultural programming
- Access to outdoor swimming pool
- Access to comprehensive wellness facilities across two floors including the Aman Spa, Medical Wellness by Hertiude Clinic, 24-hour Fitness Centre, relaxation room, hydro and thermal facilities

Stays of two or more consecutive nights also include:

- Return fast track airport services and limousine transfers



## Accommodation

Aman Nai Lert Bangkok's 52 suites, starting at 94 square metres with some interconnecting, are among the largest in the city. Situated on floors 11 through 18, suites feature floor-to-ceiling windows framing cityscape and heritage garden views.

The Aman Suite covers an entire floor, spanning an impressive 713 square metres.

14	Deluxe Suites	94 - 98sqm
20	Premier Suites	94 - 99sqm
7	Corner Suites	92sqm
7	Premier Corner Suites	92sqm
1	Terrace Suite	114sqm
1	Aman Suite	566 - 713sqm (1 to 3 bedrooms)

### DELUXE SUITES

- Located on floors 11 to 17
- From 94 to 98 square metres (1,012 to 1,055 square feet)
- Floor-to-ceiling windows
- Sweeping views of northern Bangkok
- Oversized king bed or deluxe twin beds
- Large bathroom with impressive round tub, rain shower and dual vanities
- Pivoting panels between bathroom and bedroom
- Double walk-in wardrobe
- Spacious desk providing ample workspace
- Retractable smart television
- Large daybed
- Available with adjoining Corner Suite to become a two-bedroom suite



## PREMIER SUITES

- Located on floors 11 to 17
- From 94 to 99 square metres (1,012 to 1,066 square feet)
- Floor-to-ceiling windows
- Sweeping views of western and southern Bangkok
- Oversized king bed
- Large bathroom with impressive round tub, rain shower and dual vanities
- Pivoting panels between bathroom and bedroom
- Double walk-in wardrobe
- Spacious desk providing ample workspace
- Retractable smart television
- Large daybed
- Available with adjoining Premier Corner Suite to become a two-bedroom suite (both oversized king beds)

## CORNER SUITES

- Located on floors 11 to 17
- 92 square metres (990 square feet)
- Floor-to-ceiling windows
- 270-degree sweeping views of western and northern Bangkok
- Oversized king bed
- Large bathroom with impressive round tub, rain shower and dual vanities
- Double walk-in wardrobe
- Spacious desk providing ample workspace
- Retractable smart television
- Large daybed
- Available with adjoining Deluxe Suite to become a two-bedroom suite



## PREMIER CORNER SUITES

- Located on floors 11 to 17
- 92 square metres (990 square feet)
- Floor-to-ceiling windows
- 270-degree sweeping views of western and southern Bangkok
- Oversized king bed
- Large bathroom with impressive round tub, rain shower and dual vanities
- Double walk-in wardrobe
- Spacious desk providing ample workspace
- Retractable smart television
- Large daybed
- Available with adjoining Premier Suite to become a two-bedroom suite (both oversized king beds)

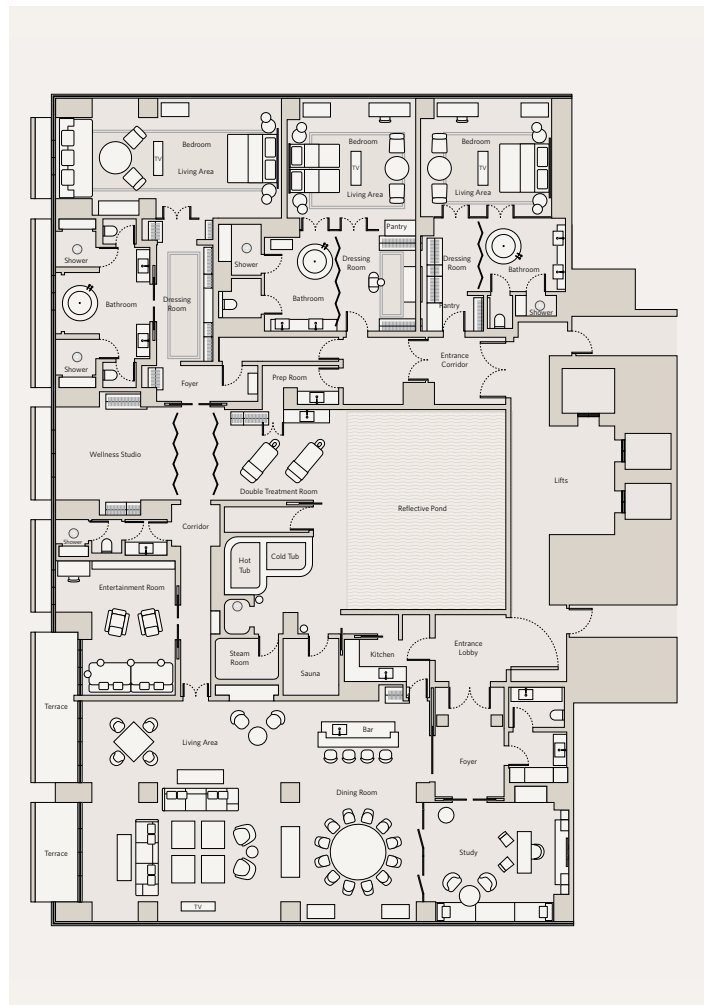
## TERRACE SUITE

- Located on floor 17
- 114 square metres (1,227 square feet)
- Floor-to-ceiling glass doors leading onto private terrace
- Sweeping vistas of the western Bangkok cityscape with sunset views
- Oversized king bed
- Large bathroom with impressive round tub, rain shower and dual vanities
- Pivoting panels between bathroom and bedroom areas
- Double walk-in wardrobe
- Spacious desk providing ample workspace
- Retractable smart television
- Large daybed



## AMAN SUITE

- Occupying floor 18 in its entirety
- Balcony and terrace
- 566 square metres to 713 square metres (6,092 to 7,675 square feet) depending on number of bedrooms (up to three)
- Floor-to-ceiling windows and glass doors
- Oversized king bed in primary suite
- Private spa with hot and cold plunge pools, sauna and steam room
- Spacious living room
- Dining room with bar counter and separate kitchen
- Large bathroom with impressive oversized round tub, dual rain shower and double vanities
- Double walk-in wardrobe
- Dedicated study
- Entertainment room
- Primary suite can be joined by one or two junior suites (one with oversized king bed and one with twin beds)
- Sweeping vistas of Bangkok's northern, western and southern cityscapes with views of Nai Lert Park



## Dining & Entertainment

### CELEBRATIONS & EVENTS

A contemporary urban sanctuary in a sprawling metropolis, Aman Nai Lert Bangkok is an intimate gathering space, set to become a destination for exclusive residential events, welcoming both international visitors and locals.

The hotel's social spaces provide an idyllic setting for every occasion, whether an intimate dinner or a glamorous cocktail party. Personalised serviced private lounge or meeting spaces (Heritage I, II and III) are situated on the 9th floor, all opening onto a private terrace with views over Nai Lert Park and its historic Heritage Home. The Heritage Rooms can be booked individually or in combination, accommodating up to 30 guests.

### ARVA

- Situated on the 9th floor
- Open for lunch and dinner
- Authentic Italian dishes highlighting seasonal ingredients in upscale surroundings
- Three private dining rooms, which can be combined and accommodate up to 28 guests

### 1872

- A convivial lounge and bar serving Western classics, Thai cuisine and Afternoon Tea
- Situated on the 9th floor with southerly views over Nai Lert Park
- All-day dining and afternoon tea
- The bar offers exceptional cocktails overlooking the striking atrium and reflection pond
- Outdoor terrace with park views

### THE POOL

- A relaxed, poolside eatery serving light fare and refreshing drinks
- Situated on the 9th floor with eastern and sunrise vistas
- Healthy Western classics and Thai cuisine
- Open throughout the day



#### AMAN LOUNGE

- A lofty music lounge with skyline views, open nightly
- Hosting a variety of live musicians
- Serving bespoke cocktails paired with Japanese izakaya-inspired bites

#### CIGAR BAR

- An elegant cigar bar exclusively for hotel guests and residents
- Curated collection of cigars and aged spirits
- Open-air terrace
- Features private humidor

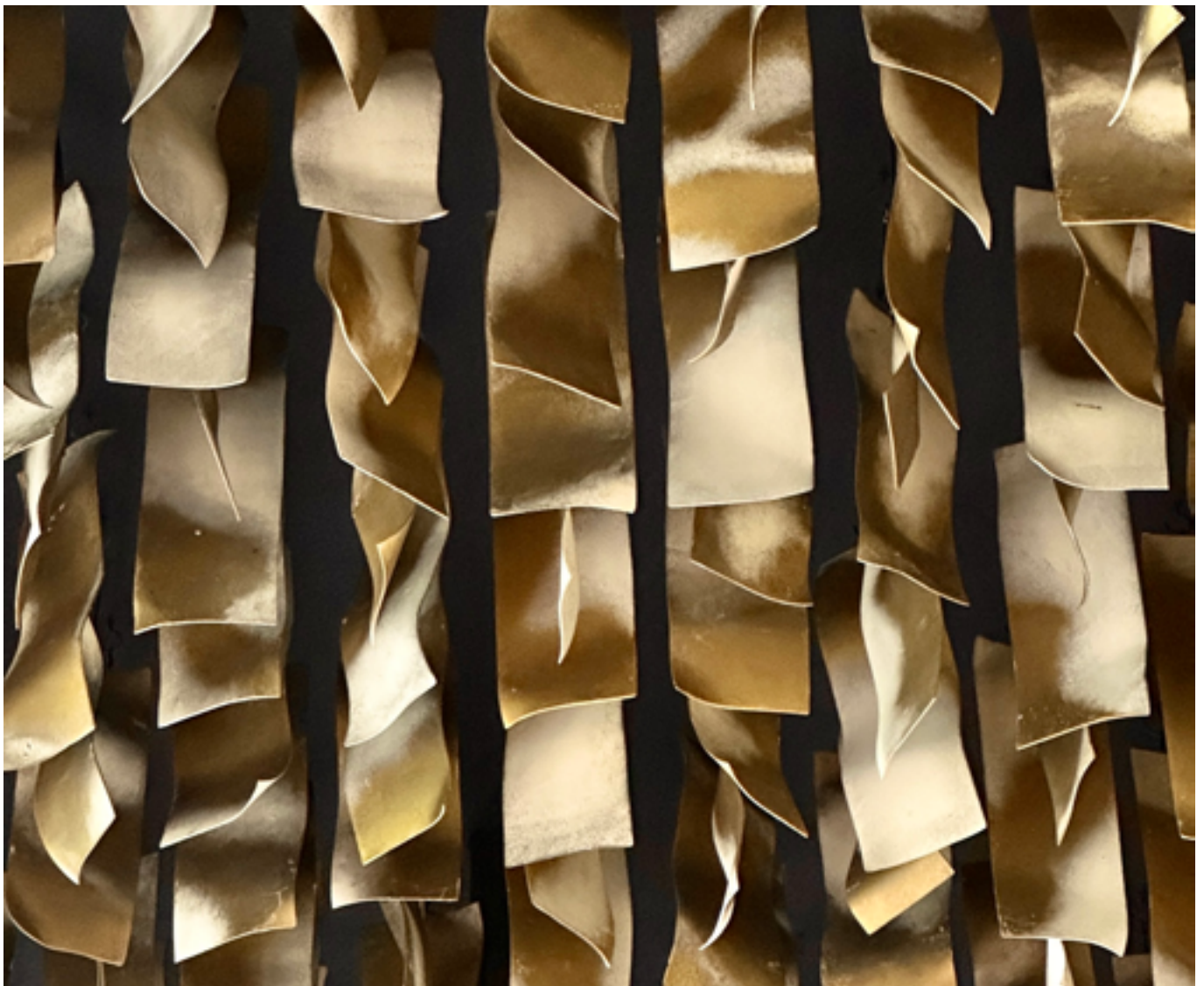
#### SESUI

- A sushi omakase experience with a set menu created by the chef daily
- Open for dinner
- Eight-seater hinoki counter and a select few tables on its west-facing terrace
- A culinary journey designed by the chef and inspired by seasonal ingredients

#### HIORI

- Atmospheric 14-seater Japanese teppanyaki counter
- Chef's counter seating offering an interactive experience
- Open for dinner
- Skilled chefs combine market-fresh seasonal meats, seafood and vegetables on sizzling griddles in fiery displays of live culinary artistry

The Aman Lounge, Cigar Bar, Sesui and Hiori are located on the 19th floor and are exclusively for hotel guests, residents and Aman Club Founders.





## Aman Spa & Wellness

The 1,500-square-metre (16,145-square-foot) Aman Spa & Wellness in the heart of Aman Nai Lert Bangkok reflects Thailand's traditional healing lore as well as the capital's status as a leading global hub for wellness optimisation. Two floors are dedicated to wellbeing, with the Medical Wellness by Hertitude Clinic on the 8th floor and the Aman Spa on the 10th. All-encompassing Urban Wellness Programmes taking advantage of every facility are tailored to individual needs.

### MEDICAL WELLNESS BY HERTITUDE CLINIC

- Overseen by certified medical doctors and serviced by Hertitude Clinic
- An integrative wellness approach
- Comprehensive medical evaluations working with client history and cutting-edge technology and blood panel analysis
- Eight private clinic rooms and one examination room
- IV Lounge for intravenous Nutrient Infusion Therapy
- Full body cryotherapy facilities

### AMAN SPA

- Reception lounge and boutique
- Wellness refreshments, including tonics featuring medicinal herbs
- Five single spa treatment rooms, one double room and one Thai massage room
- Traditional Thai massage and herbal treatments
- Hydrotherapy facilities including dry and steam saunas, hot tubs, cold plunge pools and experiential showers
- Private Banyan Spa House
- Extensive fitness and movement facilities
- Salon for hair and nails



## SPA HOUSE

- Wood-clad Banya
- Vichy experience shower
- Hot bath and cold plunge pool
- Double treatment room
- Living room relaxation space

## FITNESS, MOVEMENT & FINISHING TOUCHES

While the 10th floor's hydrotherapy facilities offer hot/cold immersion to boost the immune and lymphatic systems, the Banya Spa House provides the perfect retreat for half- or full-day wellness journeys. Meanwhile, the 10th floor fitness spaces offer every opportunity to enhance movement and performance. After a workout, visit the salon or cool off in the outdoor swimming pool on the 9th floor.

## FITNESS CENTRE

- State-of-the-art Technogym equipment, including cardiovascular and weight-training machines
- Personalised self-optimising programmes
- Private fitness sessions with professional trainers

## SWIMMING POOL

- 25-metre (82-foot) outdoor swimming pool
- Situated on the 9th floor with views over Nai Lert Park
- Lined with double daybeds
- Poolside bar serving light fare and refreshing beverages

## PILATES, MOVEMENT & MINDFULNESS STUDIOS

- Fully equipped with Balanced Body Reformers and other Pilates-specific apparatus
- Private classes including yoga, Pilates, Thai boxing and HIIT
- Personalised movement and mindfulness sessions, including meditation and sound healing

## HAIR & NAIL SALON

- Three hair styling stations
- Head spa and hair washing station
- Manicure and pedicure service stations



Ā M Ā N

AMAN  
NAI LERT BANGKOK  
1 Soi Somkid, Lumpini  
Pathumwan, Bangkok 10330, Thailand  
Email: [anlb.res@aman.com](mailto:anlb.res@aman.com)

AMAN  
CENTRAL RESERVATIONS  
Tel: +65 3165 4865  
USA: +1 754 216 7830  
Email: [reservations@aman.com](mailto:reservations@aman.com)  
[aman.com](http://aman.com)